

SAMPLE NAME: After Party (1g)

Concentrate, Product Inhalable

CULTIVATOR / MANUFACTURER

Business Name: Central Coast Ag Products, LLC

License Number: CDPH-10003156

Address: 1201 West Chestnut Ave. Lompoc CA 93436

DISTRIBUTOR

Business Name: CENTRAL COAST AG DISTRIBUTION, LLC

License Number: C11-0000496-LIC

Address: 1201 Chestnut St W Lompoc CA 93436



SAMPLE DETAIL

Batch Number: 220000127

Sample ID: 220211M001

Source Metrc UID:
 1A4060300002EE1000026994

Date Collected: 02/11/2022

Date Received: 02/12/2022

Batch Size: 5311.0 units

Sample Size: 20.0 units

Unit Mass: 1 grams per Unit

Serving Size:



Scan QR code to verify authenticity of results.

Sampling Method: QSP 1265 - Sampling of Cannabis and Product Batches

CANNABINOID ANALYSIS - SUMMARY ✔ PASS

Sum of Cannabinoids: 85.41%

Total Cannabinoids: 85.41%

Total THC: 82.668%

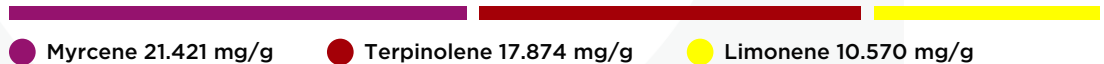
Total CBD: 0.165%

Sum of Cannabinoids = $\Delta 9\text{THC} + \text{THCa} + \text{CBD} + \text{CBDa} + \text{CBG} + \text{CBGa} + \text{THCV} + \text{THCVa} + \text{CBC} + \text{CBCa} + \text{CBDV} + \text{CBDVa} + \Delta 8\text{THC} + \text{CBL} + \text{CBN}$
 Total Cannabinoids = $(\Delta 9\text{THC} + 0.877 \cdot \text{THCa}) + (\text{CBD} + 0.877 \cdot \text{CBDa}) + (\text{CBG} + 0.877 \cdot \text{CBGa}) + (\text{THCV} + 0.877 \cdot \text{THCVa}) + (\text{CBC} + 0.877 \cdot \text{CBCa}) + (\text{CBDV} + 0.877 \cdot \text{CBDVa}) + \Delta 8\text{THC} + \text{CBL} + \text{CBN}$
 Total THC/CBD is calculated using the following formulas to take into account the loss of a carboxyl group during the decarboxylation step:
 Total THC = $\Delta 9\text{THC} + (\text{THCa} \cdot 0.877)$
 Total CBD = $\text{CBD} + (\text{CBDa} \cdot 0.877)$

TERPENOID ANALYSIS - SUMMARY

39 TESTED, TOP 3 HIGHLIGHTED

Total Terpenoids: 6.7802%



SAFETY ANALYSIS - SUMMARY

$\Delta 9\text{THC}$ per Unit: ✔ PASS

Pesticides: ✔ PASS

Mycotoxins: ✔ PASS

Residual Solvents: ✔ PASS

Heavy Metals: ✔ PASS

Microbiology: ✔ PASS

Foreign Material: ✔ PASS

These results relate only to the sample included on this report. This report shall not be reproduced, except in full, without written approval of the laboratory.

Sample Certification: California Code of Regulations Title 16 Effect Date January 16, 2019. Authority: Section 26013, Business and Professions Code. Reference: Sections 26100, 26104 and 26110, Business and Professions Code.

Decision Rule: Statements of conformity (e.g. Pass/Fail) to specifications are made in this report without taking measurement uncertainty into account. Where statements of conformity are made in this report, the following decision rules are applied: PASS - Results within limits/specifications, FAIL - Results exceed limits/specifications.

References: limit of detection (LOD), limit of quantification (LOQ), not detected (ND), not tested (NT)




All LQC samples were performed and met the prescribed acceptance criteria in 4 CCR section 1730, as attested by:
 Michael Pham
 Date: 02/13/2022

Approved by: Josh Wurzer, President
 Date: 02/13/2022



CANNABINOID TEST RESULTS - 02/12/2022 ✔ PASS

Tested by high-performance liquid chromatography with diode-array detection (HPLC-DAD). **Method:** QSP 1157 - Analysis of Cannabinoids by HPLC-DAD

TOTAL CANNABINOIDS: 85.41%

Total Cannabinoids (Total THC) + (Total CBD) + (Total CBG) + (Total THCV) + (Total CBC) + (Total CBDV) + Δ8THC + CBL + CBN

TOTAL THC: 82.668%

Total THC (Δ9THC+0.877*THCa)

TOTAL CBD: 0.165%

Total CBD (CBD+0.877*CBDa)

TOTAL CBG: 1.761%

Total CBG (CBG+0.877*CBGa)

TOTAL THCV: 0.49%

Total THCV (THCV+0.877*THCVa)

TOTAL CBC: ND

Total CBC (CBC+0.877*CBCa)

TOTAL CBDV: ND

Total CBDV (CBDV+0.877*CBDVa)

COMPOUND	LOD/LOQ (mg/g)	MEASUREMENT UNCERTAINTY (mg/g)	RESULT (mg/g)	RESULT (%)
Δ9THC	0.06 / 0.26	±28.438	826.68	82.668
CBG	0.06 / 0.19	±0.694	17.61	1.761
THCV	0.1 / 0.2	±0.24	4.9	0.49
CBN	0.1 / 0.3	±0.22	3.3	0.33
CBD	0.07 / 0.29	±0.076	1.65	0.165
Δ8THC	0.1 / 0.4	N/A	ND	ND
THCa	0.05 / 0.14	N/A	ND	ND
THCVa	0.07 / 0.20	N/A	ND	ND
CBDa	0.02 / 0.19	N/A	ND	ND
CBDV	0.04 / 0.15	N/A	ND	ND
CBDVa	0.03 / 0.53	N/A	ND	ND
CBGa	0.1 / 0.2	N/A	ND	ND
CBL	0.06 / 0.24	N/A	ND	ND
CBC	0.2 / 0.5	N/A	ND	ND
CBCa	0.07 / 0.28	N/A	ND	ND
SUM OF CANNABINOIDS			854.1 mg/g	85.41%

UNIT MASS: 1 grams per Unit

Δ9THC per Unit	1100 per-package limit	826.68 mg/unit	PASS
Total THC per Unit		826.68 mg/unit	
CBD per Unit		1.65 mg/unit	
Total CBD per Unit		1.65 mg/unit	
Sum of Cannabinoids per Unit		854.1 mg/unit	
Total Cannabinoids per Unit		854.1 mg/unit	

TERPENOID TEST RESULTS - 02/13/2022

Terpene analysis utilizing gas chromatography-flame ionization detection (GC-FID). **Method:** QSP 1192 - Analysis of Terpenoids by GC-FID

COMPOUND	LOD/LOQ (mg/g)	MEASUREMENT UNCERTAINTY (mg/g)	RESULT (mg/g)	RESULT (%)
Myrcene	0.008 / 0.025	±0.2763	21.421	2.1421
Terpinolene	0.008 / 0.026	±0.3664	17.874	1.7874
Limonene	0.005 / 0.016	±0.1512	10.570	1.0570
β Caryophyllene	0.004 / 0.012	±0.1600	4.494	0.4494
β Pinene	0.004 / 0.014	±0.0373	3.241	0.3241
α Pinene	0.005 / 0.017	±0.0257	2.989	0.2989
α Humulene	0.009 / 0.029	±0.0424	1.320	0.1320
Linalool	0.009 / 0.032	±0.0370	0.974	0.0974
Ocimene	0.011 / 0.038	±0.0243	0.756	0.0756
α Phellandrene	0.006 / 0.020	±0.0092	0.673	0.0673
3 Carene	0.005 / 0.018	±0.0083	0.581	0.0581
α Terpinene	0.005 / 0.017	±0.0077	0.516	0.0516
trans-β-Farnesene	0.008 / 0.025	±0.0159	0.447	0.0447
Fenchol	0.010 / 0.034	±0.0166	0.428	0.0428
γ Terpinene	0.006 / 0.018	±0.0067	0.385	0.0385
Terpineol	0.016 / 0.055	±0.0212	0.346	0.0346
Camphene	0.005 / 0.015	±0.0024	0.209	0.0209
Borneol	0.005 / 0.016	±0.0034	0.081	0.0081
Guaiol	0.009 / 0.030	±0.0036	0.077	0.0077
Sabinene	0.004 / 0.014	±0.0008	0.065	0.0065
Fenchone	0.009 / 0.028	±0.0019	0.064	0.0064
α Bisabolol	0.008 / 0.026	±0.0029	0.055	0.0055
Eucalyptol	0.006 / 0.018	±0.0012	0.048	0.0048
Valencene	0.009 / 0.030	±0.0032	0.047	0.0047
p-Cymene	0.005 / 0.016	±0.0012	0.044	0.0044
Nerolidol	0.009 / 0.028	±0.0023	0.037	0.0037
Sabinene Hydrate	0.006 / 0.022	±0.0012	0.032	0.0032
Citronellol	0.003 / 0.010	±0.0014	0.028	0.0028
Nerol	0.003 / 0.011	N/A	<LOQ	<LOQ
Geraniol	0.002 / 0.007	N/A	<LOQ	<LOQ
Caryophyllene Oxide	0.010 / 0.033	N/A	<LOQ	<LOQ
(-)-Isopulegol	0.005 / 0.016	N/A	ND	ND
Camphor	0.006 / 0.019	N/A	ND	ND
Isoborneol	0.004 / 0.012	N/A	ND	ND
Menthol	0.008 / 0.025	N/A	ND	ND
R-(+)-Pulegone	0.003 / 0.011	N/A	ND	ND
Geranyl Acetate	0.004 / 0.014	N/A	ND	ND
α Cedrene	0.005 / 0.016	N/A	ND	ND
Cedrol	0.008 / 0.027	N/A	ND	ND
TOTAL TERPENOIDS			67.802 mg/g	6.7802%