

SAMPLE NAME: Blue Dream (1g)

Concentrate, Product Inhalable

CULTIVATOR / MANUFACTURER

Business Name: Central Coast Ag Products, LLC

License Number: CDPH-10003156

Address: 1201 West Chestnut Ave. Lompoc CA 93436

DISTRIBUTOR

Business Name: CENTRAL COAST AG DISTRIBUTION, LLC

License Number: C11-0000496-LIC

Address: 1201 Chestnut St W Lompoc CA 93436



SAMPLE DETAIL

Batch Number: 220000473

Sample ID: 220419L005

Source Metrc UID:
1A4060300002EE1000031146

Date Collected: 04/19/2022

Date Received: 04/20/2022

Batch Size: 2210.0 units

Sample Size: 20.0 units

Unit Mass: 1 grams per Unit

Serving Size:



Scan QR code to verify authenticity of results.

Sampling Method: QSP 1265 - Sampling of Cannabis and Product Batches

CANNABINOID ANALYSIS - SUMMARY ✔ PASS

Sum of Cannabinoids: 87.8%

Total Cannabinoids: 87.80%

Total THC: 84.164%

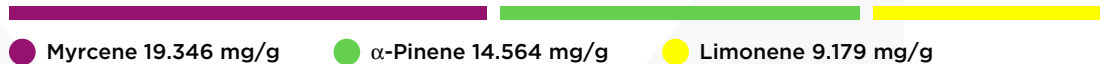
Total CBD: 0.155%

Sum of Cannabinoids = Δ^9 -THC + THCa + CBD + CBDa + CBG + CBGa + THCv + THCVa + CBC + CBCa + CBDV + CBDVa + Δ^8 -THC + CBL + CBN
 Total Cannabinoids = $(\Delta^9$ -THC + 0.877*THCa) + (CBD + 0.877*CBDa) + (CBG + 0.877*CBGa) + (THCV + 0.877*THCVa) + (CBC + 0.877*CBCa) + (CBDV + 0.877*CBDVa) + Δ^8 -THC + CBL + CBN
 Total THC/CBD is calculated using the following formulas to take into account the loss of a carboxyl group during the decarboxylation step:
 Total THC = Δ^9 -THC + (THCa (0.877))
 Total CBD = CBD + (CBDa (0.877))

TERPENOID ANALYSIS - SUMMARY

39 TESTED, TOP 3 HIGHLIGHTED

Total Terpenoids: 6.1637%



SAFETY ANALYSIS - SUMMARY

Δ^9 -THC per Unit: ✔ PASS

Pesticides: ✔ PASS

Mycotoxins: ✔ PASS

Residual Solvents: ✔ PASS

Heavy Metals: ✔ PASS

Microbiology: ✔ PASS

Foreign Material: ✔ PASS

These results relate only to the sample included on this report. This report shall not be reproduced, except in full, without written approval of the laboratory.

Sample Certification: California Code of Regulations Title 16 Effect Date January 16, 2019. Authority: Section 26013, Business and Professions Code. Reference: Sections 26100, 26104 and 26110, Business and Professions Code.

Decision Rule: Statements of conformity (e.g. Pass/Fail) to specifications are made in this report without taking measurement uncertainty into account. Where statements of conformity are made in this report, the following decision rules are applied: PASS - Results within limits/specifications, FAIL - Results exceed limits/specifications.

References: limit of detection (LOD), limit of quantification (LOQ), not detected (ND), not tested (NT)




All LQC samples were performed and met the prescribed acceptance criteria in 4 CCR section 1730, as attested by:
 Michael Pham
 Date: 04/21/2022

Approved by: Josh Wurzer, President
 Date: 04/21/2022



CANNABINOID TEST RESULTS - 04/20/2022 ✔ PASS

Tested by high-performance liquid chromatography with diode-array detection (HPLC-DAD). **Method:** QSP 1157 - Analysis of Cannabinoids by HPLC-DAD

TOTAL CANNABINOIDS: 87.80%

Total Cannabinoids (Total THC) + (Total CBD) + (Total CBG) + (Total THCV) + (Total CBC) + (Total CBDV) + Δ⁸-THC + CBL + CBN

TOTAL THC: 84.164%

Total THC (Δ⁸-THC+0.877*THCa)

TOTAL CBD: 0.155%

Total CBD (CBD+0.877*CBDA)

TOTAL CBG: 2.676%

Total CBG (CBG+0.877*CBGa)

TOTAL THCV: 0.35%

Total THCV (THCV+0.877*THCVa)

TOTAL CBC: ND

Total CBC (CBC+0.877*CBCa)

TOTAL CBDV: ND

Total CBDV (CBDV+0.877*CBDVa)

COMPOUND	LOD/LOQ (mg/g)	MEASUREMENT UNCERTAINTY (mg/g)	RESULT (mg/g)	RESULT (%)
Δ ⁹ -THC	0.06 / 0.26	±22.556	841.64	84.164
CBG	0.06 / 0.19	±0.822	26.76	2.676
THCV	0.1 / 0.2	±0.14	3.5	0.35
Δ ⁸ -THC	0.1 / 0.4	±0.17	2.7	0.27
CBN	0.1 / 0.3	±0.09	1.8	0.18
CBD	0.07 / 0.29	±0.056	1.55	0.155
THCa	0.05 / 0.14	N/A	ND	ND
THCVa	0.07 / 0.20	N/A	ND	ND
CBDA	0.02 / 0.19	N/A	ND	ND
CBDV	0.04 / 0.15	N/A	ND	ND
CBDVa	0.03 / 0.53	N/A	ND	ND
CBGa	0.1 / 0.2	N/A	ND	ND
CBL	0.06 / 0.24	N/A	ND	ND
CBC	0.2 / 0.5	N/A	ND	ND
CBCa	0.07 / 0.28	N/A	ND	ND
SUM OF CANNABINOIDS			878.0 mg/g	87.8%

UNIT MASS: 1 grams per Unit

Δ ⁹ -THC per Unit	1100 per-package limit	841.64 mg/unit	PASS
Total THC per Unit		841.64 mg/unit	
CBD per Unit		1.55 mg/unit	
Total CBD per Unit		1.55 mg/unit	
Sum of Cannabinoids per Unit		878.0 mg/unit	
Total Cannabinoids per Unit		878.0 mg/unit	

TERPENOID TEST RESULTS - 04/21/2022

Terpene analysis utilizing gas chromatography-flame ionization detection (GC-FID). **Method:** QSP 1192 - Analysis of Terpenoids by GC-FID

COMPOUND	LOD/LOQ (mg/g)	MEASUREMENT UNCERTAINTY (mg/g)	RESULT (mg/g)	RESULT (%)
Myrcene	0.008 / 0.025	±0.1935	19.346	1.9346
α-Pinene	0.005 / 0.017	±0.0976	14.564	1.4564
Limonene	0.005 / 0.016	±0.1019	9.179	0.9179
β-Pinene	0.004 / 0.014	±0.0684	7.689	0.7689
β-Caryophyllene	0.004 / 0.012	±0.1014	3.662	0.3662
Linalool	0.009 / 0.032	±0.0679	2.295	0.2295
trans-β-Farnesene	0.008 / 0.025	±0.0302	1.094	0.1094
α-Humulene	0.009 / 0.029	±0.0252	1.010	0.1010
Valencene	0.009 / 0.030	±0.0323	0.602	0.0602
Fenchol	0.010 / 0.034	±0.0132	0.438	0.0438
Camphene	0.005 / 0.015	±0.0033	0.366	0.0366
Terpineol	0.009 / 0.031	±0.0168	0.352	0.0352
Terpinolene	0.008 / 0.026	±0.0051	0.321	0.0321
α-Bisabolol	0.008 / 0.026	±0.0063	0.152	0.0152
Nerolidol	0.006 / 0.019	±0.0062	0.127	0.0127
Citronellol	0.003 / 0.010	±0.0045	0.118	0.0118
Borneol	0.005 / 0.016	±0.0038	0.116	0.0116
β-Ocimene	0.006 / 0.020	±0.0018	0.071	0.0071
Sabinene Hydrate	0.006 / 0.022	±0.0013	0.043	0.0043
Fenchone	0.009 / 0.028	±0.0007	0.030	0.0030
Eucalyptol	0.006 / 0.018	±0.0006	0.028	0.0028
γ-Terpinene	0.006 / 0.018	±0.0003	0.022	0.0022
Geraniol	0.002 / 0.007	±0.0004	0.012	0.0012
α-Phellandrene	0.006 / 0.020	N/A	<LOQ	<LOQ
α-Terpinene	0.005 / 0.017	N/A	<LOQ	<LOQ
Nerol	0.003 / 0.011	N/A	<LOQ	<LOQ
Caryophyllene Oxide	0.010 / 0.033	N/A	<LOQ	<LOQ
Sabinene	0.004 / 0.014	N/A	ND	ND
Δ ³ -Carene	0.005 / 0.018	N/A	ND	ND
p-Cymene	0.005 / 0.016	N/A	ND	ND
Isopulegol	0.005 / 0.016	N/A	ND	ND
Camphor	0.006 / 0.019	N/A	ND	ND
Isoborneol	0.004 / 0.012	N/A	ND	ND
Menthol	0.008 / 0.025	N/A	ND	ND
Pulegone	0.003 / 0.011	N/A	ND	ND
Geranyl Acetate	0.004 / 0.014	N/A	ND	ND
α-Cedrene	0.005 / 0.016	N/A	ND	ND
Guaiol	0.009 / 0.030	N/A	ND	ND
Cedrol	0.008 / 0.027	N/A	ND	ND
TOTAL TERPENOIDS			61.637 mg/g	6.1637%